

**FINISH CUT WALK-BEHIND**

# A FINISHING TOUCH OTHERS WILL COVET

The SFC-30 Finish Cut Walk-Behind Mower may be compact, but it's big on productivity and versatility. This commercial-grade machine is fully-welded and fabricated using ultra-strong military grade steel plus it delivers a beautiful, professional quality-of-cut, helping you put the finishing touches on the job or at home.



**SCAG**  
POWER EQUIPMENT

**ELIAS L.**  
New Providence, NJ

SCAG OWNER FOR 15 YEARS  
COMMERCIAL OPERATOR

**WHY DID YOU CHOOSE SCAG?**  
*"Quality-of-cut and durability."*

**HOW MANY SCAGS ARE IN YOUR FLEET  
AND WHICH MODEL(S) DO YOU RUN?**  
*"7+ mowers – Turf Tigers, V-Rides,  
Hydro Walk-Behinds, SFC-30."*

## FEATURES & SPECIFICATIONS

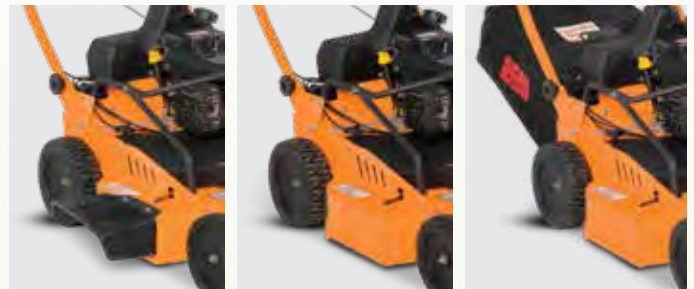
- 1 Heavy-duty construction ensures years of worry-free service and productivity.
  - 2 Blade brake clutch allows the operator to disengage cutter blades without shutting off the machine.
  - 3 Offset cutter blade layout results in a simple, more user-friendly system than timed belt setups.
    - Easy-to-maintain design means belt replacement takes less than half the time as compared to timed belt designs. Tool-free removal of belt cover.
    - Proven, maintenance-free GT MV 702 transmission delivers dependable drive power.
    - Productive ground speeds help get the job done fast; up to 4 mph.
    - Extra-strong, fully-fabricated and welded cutter deck; 14-gauge, grade 100, military-grade steel deck shell with 12-gauge spindle reinforcement plate. ¼" trim-side bar provides extra protection.
    - Powerful and efficient Kohler® Command PRO® CV224 engine delivers ample power, along with exceptional efficiency and dependable performance.
- Quick engine oil-drain paired with Kohler's® Clean-Change™ System make for easy oil changes without a mess.
    - 3-year limited engine warranty through Kohler.
    - 1-gallon fuel tank provides long run time (excludes CA models).



# SFC-30



Front swivel caster wheel model offers increased ease of maneuverability in highly landscaped areas. Swivel Wheel accessory also available to convert fixed-wheel models.



3-in-1 versatility delivers the ability to side-discharge, mulch or collect clippings. All items come standard, so you can meet the demands of any job without purchasing extra accessories.



Ultra-comfortable, ergonomic control system is designed to make operation easy, hour after hour. 5-position handlebar height adjustment.



Single-point, rider-style height-of-cut adjustment. Cutting heights from 1½" to 5" in ¼" increments. Pin installs from the top for quick, easy changes.

Actual product may differ from photos.

# WALK-BEHIND MOWER MODEL NUMBERS



	MODEL NUMBER	DECK WIDTH	HP*	ENGINE
<b>SFC-30</b>	SFC-30-7CV	30"	7	Kohler® Command PRO® 224CV
	SFC-30-7CV-CA*		7	Kohler® Command PRO® 224CV
	SFC-30-7CV-S		7	Kohler® Command PRO® 224CV
	SFC-30-7CV-S-CA*		7	Kohler® Command PRO® 224CV
<b>SFC-21</b>	SFC-21-4GX	21"	4	Honda® GX160
	SFC-21-5CV		5	Kohler® Command PRO® 173CV
	SFC-21-7CV		7	Kohler® Command PRO® 224CV

\* California model

# WARRANTIES

Since Scag® Power Equipment was established in 1983, we've built an industry-wide reputation for producing reliable, heavy-duty commercial equipment. We are proud of the quality of our mowers and their well-earned reputation for durability. The Scag warranty policy shows our commitment to you and to the products we manufacture. See your local Scag dealer for details on the warranty policy or reference the Limited Warranty Statement included in your operator's manual.

## TURF TIGER II, CHEETAH II, TIGER CAT II, V-RIDE II, SWZ & SW WARRANTY

### 2-YEAR COMMERCIAL MACHINE WARRANTY\*

Frame and structural components including oil reservoirs, fittings, oil coolers, electrical switches and clutches, pulleys, hydraulic pumps and wheel motors are covered for two years of commercial use. This warranty covers manufacturing defects for two years, including parts and labor (excludes wear items).

### 3-YEAR CUTTER DECK SPINDLE WARRANTY\*

Velocity Plus™ and Advantage™ cutter decks are equipped with the exclusive Scag heavy-duty, cast-iron cutter blade spindle. We ensure our spindle's dependability, not only through its top-quality construction, but also through complete coverage of parts and labor for the first and second years, and parts only for the third year. Applies to commercial and non-commercial use.

### 3-YEAR OR 500-HOUR NON-COMMERCIAL\*\* MACHINE WARRANTY\*

Frame and structural components including oil reservoirs, fittings, oil coolers, electrical switches and clutches, pulleys, hydraulic pumps and wheel motors are covered for three years or 500 hours (whichever comes first) of non-commercial use. This warranty covers manufacturing defects for three years or 500 hours (whichever comes first), including parts and labor (excludes wear items).

## PATRIOT, EVZ & SWZT WARRANTY

### 2-YEAR COMMERCIAL MACHINE WARRANTY\*

### 3-YEAR OR 500-HOUR NON-COMMERCIAL\*\* MACHINE WARRANTY\*

## FREEDOM Z & SFC WARRANTY

### 1-YEAR COMMERCIAL MACHINE WARRANTY\*

### 3-YEAR OR 500-HOUR NON-COMMERCIAL\*\* MACHINE WARRANTY\*

## LIBERTY Z WARRANTY

### 5-YEAR OR 750-HOUR NON-COMMERCIAL\*\* MACHINE WARRANTY\*

### SPINDLE LIMITED WARRANTY\*

Spindle assemblies have a limited warranty for five years or 750 hours (whichever comes first). The first and second years of the warranty cover parts and labor. The third through fifth years cover parts only for non-commercial use.

## AERSTORM AERATOR, TURF STORM SPREADER-SPRAYERS, TRUCK LOADERS, WINDSTORM, EXTREME PRO BLOWER & EXTREME BLOWER WARRANTY

### 2-YEAR COMMERCIAL MACHINE WARRANTY\*

Frame and structural components including frame, blower housing, oil reservoirs, fittings, oil coolers, electrical switches and clutches, pulleys, hydraulic pumps and wheel motors (where applicable) are covered for two years of commercial use. This warranty covers manufacturing defects for two years, including parts and labor (excludes wear items).

## CLASSIC BLOWER WARRANTY

### 1-YEAR COMMERCIAL MACHINE WARRANTY\*

### 2-YEAR NON-COMMERCIAL\*\* MACHINE WARRANTY\*

## ALL PRODUCTS

### 90-DAY WEAR ITEM WARRANTY & RENTAL USE\*

Wear items, including drive belts, blades, hydraulic hoses, tires and batteries, and rental use are warranted for 90 days.

### ENGINE WARRANTY

Engines and engine components are covered by the individual engine manufacturer. See engine owner's manual for warranty period and details.

## SCAG EXTENDED WARRANTY PROGRAM

Scag's new Extended Warranty Program is better than ever. Protect your investment and enjoy peace-of-mind knowing that your Scag equipment is covered for years to come. Consult with your Scag Dealer for more information.

\*Warranty time periods are from the date of purchase, are only applicable to the original owner and are non-transferable. Warranty does not cover wear items, misuse, abuse, lack of maintenance, etc. See the Limited Warranty Statement in your owner's manual for more details.

\*\* "Non-Commercial" is defined as single-property usage, where the single property is the residence of the owner of the product. If the product is being used on more than the owner's single property, it is deemed commercial use and this warranty does not apply. Scag Power Equipment reserves the right to deny and/or void this warranty if evidence clearly points to commercial use.